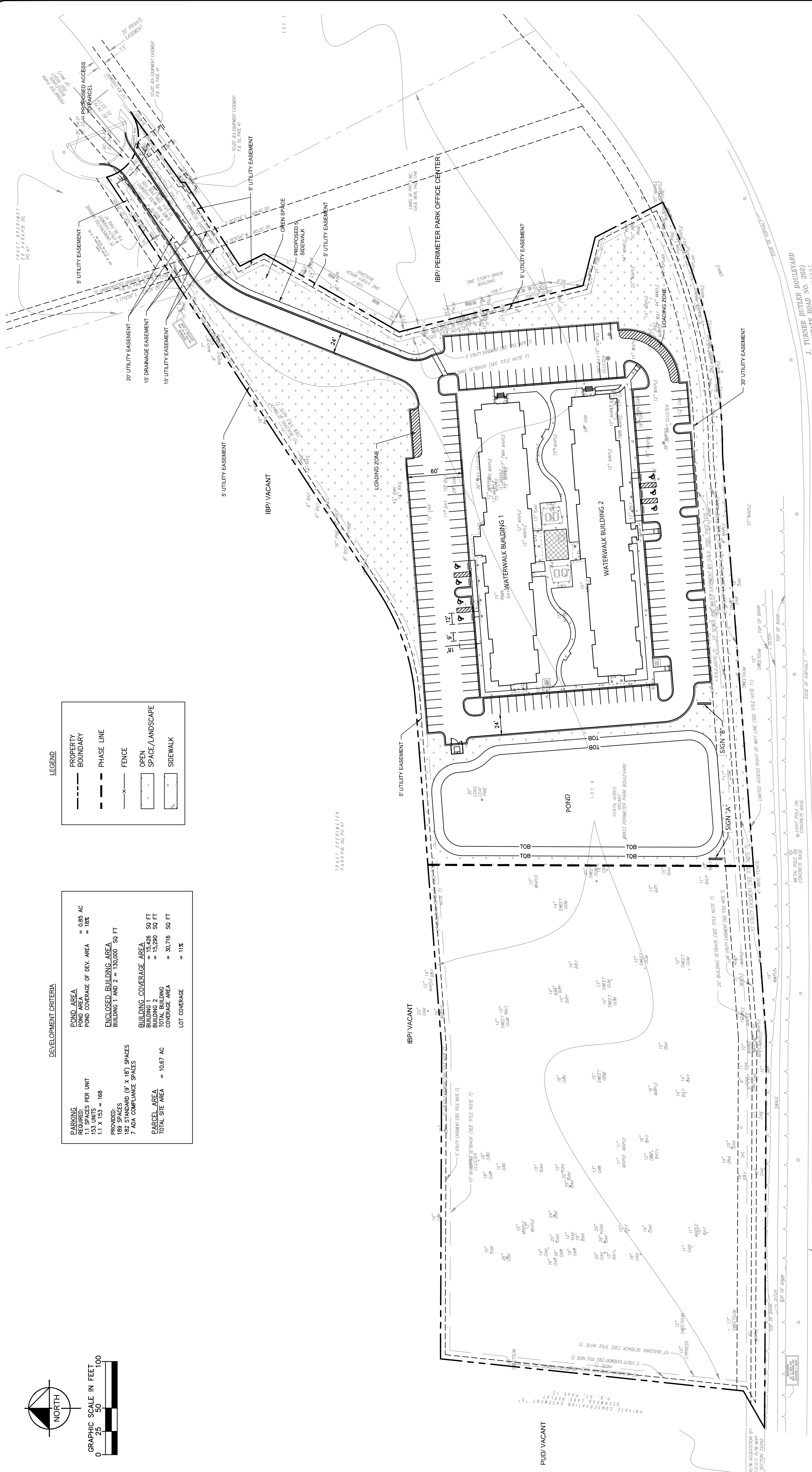


DEVELOPMENT CRITERIA

POND AREA	= 0.65 AC
POND COVERAGE OF DEV. AREA	= 18%
ENCLOSED BUILDING AREA	
BUILDING 1	= 15,426 SQ FT
BUILDING 2	= 15,280 SQ FT
TOTAL BUILDING COVERAGE AREA	= 30,716 SQ FT
LOT COVERAGE	= 11%
PARKING REQUIRED:	
1.1 SPACES PER UNIT	
1.1 X 143	= 168
PROVIDED:	
188 SPACES	(6' X 14') SPACES
7 ADA COMPLIANCE SPACES	
PARCEL AREA	= 10.67 AC
TOTAL SITE AREA	

LEGEND

PROPERTY BOUNDARY	---
PHASE LINE	- - -
FENCE	-X-
OPEN SPACE/LANDSCAPE	□
SIDEWALK	▨



WATERWALK PUD SITE PLAN

APRIL 8, 2019
8833 PERIMETER PARK BLVD., JACKSONVILLE, FLORIDA



© 2019 KIMLEY-HORN AND ASSOCIATES, INC.
12740 GRAN BAY PARKWAY WEST, SUITE 2350
JACKSONVILLE, FLORIDA 32258
PHONE: 904-828-3900
WWW.KIMLEY-HORN.COM CA 0000696